

Palala

BOUTIQUE GAME LODGE & SPA
★★★★★

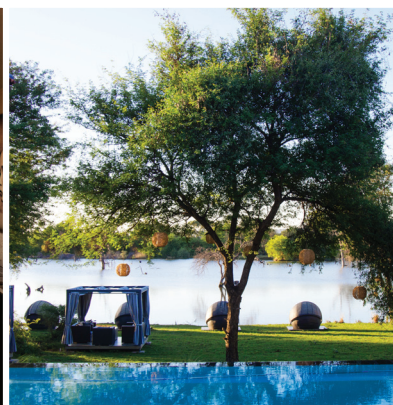
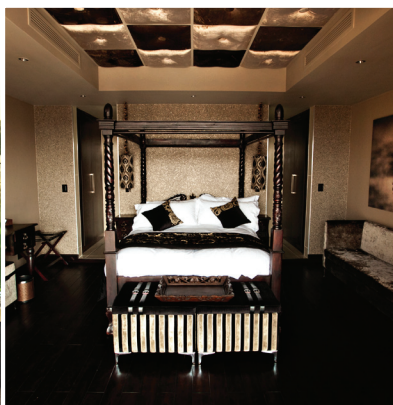
DESTINATION CONFERENCE VENUE

If you are in search of a conference destination that is far removed from the ordinary and monotonous, look no further! Palala Boutique Game Lodge will stage an encounter so unique and inspiring to ensure you return to the office with a driven and enthused team.

Our venues are widely divergent and offers a platform to execute your strategy, no matter the form or structure you may have in mind. Apart from the usual conferencing setup, our venues are pliable and ideal for any occasion ranging from presentations, strategic meetings, team-building events, company or product launches, incentive travel experiences, gala dinners, year-end functions and so much more.

The multiplicity is varied and groups can opt for indoor or outdoor areas, formal or more relaxed sessions, technology driven or more practical gatherings. The venues include our Tree of Life ballroom and Oryx conferencing venue, an appealing island setting or the more rustic Boma known as Oom Dup se Witgatwortel Lapa. Both the island and the Boma are spot-on for the various team-building activities on offer such as drum playing and potjie-kos competitions.

We can accommodate a total of 76 guests sharing in our 5-star suites and 48 guests sharing in our Boloka rooms.





Let down your hair and kick off your hiking shoes when you enjoy a true African dining experience in our Boma setting after a long hot day in the bush.

Here guests can enjoy long cocktails and casual dining from the bar, watch the Saturday rugby match or enjoy a game of pool. Young guests will be spoilt for choice in the play room fitted with all the mod cons to cater for their every desire. Illuminated by firelight and starry skies, diners will enjoy the diverse and tasteful cuisine complemented by authentic traditional flare such as potjies, braai's and wood oven pizzas.

With the African night sky overhead and a crackling bonfire before you, all that is left to do is relax and forget about all the demands and confines of the concrete jungle.



The Boma

Max. capacity 80 pax

- Bar
- Lounge
- Pool table
- Televisions
- Sound system
- Spit braai





The island brings a unique and interesting element to the diversity Palala has to offer. The island is situated in the waterway in front of the lodge and is an ideal and exclusive venue for a myriad of possibilities such as romantic picnics, wedding ceremonies, entertainment area for your wedding guests, team building events, birthday parties, and so much more.

Due to the setting, it creates the perfect back-drop to breath-taking photo opportunities and birding enthusiasts particularly enjoy it for the vast bird sighting prospects.



The Island

Max. capacity 20 pax

- Banqueting or lounge setup available
- Stretched tents included
- Standard Palala décor included
- May be used for picnics
- Bar according to group order
- Temporary bathroom





Breakfast and lunch can be enjoyed outdoors surrounded by the magic allure of the bush. Palala's bush breakfasts and lunches are the highlights for many of our guests as they get to feast on a scrumptious meal in the middle of nowhere surrounded by the sights and sounds of nature. To add to the magnificence of the experience our chefs prepares everything on an open fire.

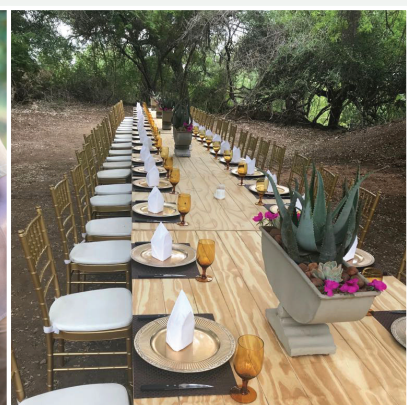
Palala's banqueting team enjoys setting up a temporary dining room in true bushveld chic style and a bar is available onsite with a selection of beverages according the group's requirements.

Guests will meet at reception where our rangers will escort them to the ultimate breakfast/lunch espace.



Bush Breakfast or Lunch

- 10-70 pax
- Banqueting setup
- Openfire kitchen setup
- Bar according to group order
- Temporary bathroom
- Transfers to and from the bush area





Whether you are a day visitor, or staying over at the prized Palala Boutique Game Lodge & Spa, know that you are in for a special treat. Enjoy the morning sunshine on the spectacular outdoor deck, suspended above the relaxing waterway with a cappuccino and a sumptuous breakfast. Patrons can enjoy rustic and relaxed lunches during the day or watch the transformation of the menu and restaurant into a fine dining delight at night.

New and exciting additions are constantly introduced to allow our guests to indulge in a culinary experience of note.



Matoppie Fine Dining

Max. capacity 76 pax

- Sparkling Wine Breakfast served daily
- Terrace lunch menu available
- Fine Dining menu available
- Designer cocktail selection
- The best of local and international whiskeys & wines





Aptly named after the Northern Sotho word “circle”, Sediko Bush Spa invites you to immerse in this African oasis offering an idyllic retreat from the demands of city life. Enthused by the soothing backdrops of nature, Sediko Bush Spa offers a haven to unwind, relax and revive the senses.

Recreate the circle of wellbeing with holistic facial and body treatments that will transport you into Sediko Bush Spa’s world of reinvigoration and renewal.

Sediko Bush Spa offers a wide variety of hydrotherapy spoils such as Hammam, Vichy and Rasul chambers, flotation pools, sensation showers, outdoor natural stone baths, saunas and steam rooms.



Sediko Bush Spa

Number of treatment rooms

- Fitness centre available
- Saunas
- Lap pool
- Pool bar
- Hair and beauty salon
- Hydro Therapies





Our junior suites exude warmth and character in a contemporary, sophisticated and welcoming style.

The focal point of the room is the imported king or queen sized four poster bed, wrapped in luxurious imported linen. The rooms offer nothing less than ultimate luxury and extreme comfort and is distinctively adorned with unique african art, rich fabrics and warm tones.

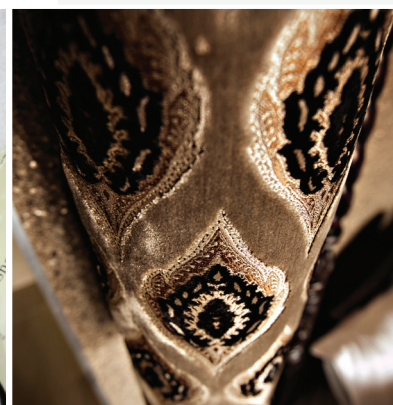
The spacious bathroom features soft and fluffy towels, complimentary bath amenities, free standing bath, glass shower and double basins, a perfect combination to enhance and encapsulate your whole experience.



Junior Suite

31 Suites | 2 pax sharing

- King size beds
- Imported linen and towels
- Writing desk
- Bathroom: free-standing bath, glass shower & double basin
- Large full length mirrors
- Hairdryer & International shaver plug
- Air conditioning
- Electronic safe
- Iron/ironing board
- Tea & coffee making facilities
- Gowns and slippers
- Mineral water
- Room turn-down service
- No TV in this suites





When romance is in the air and you are considering spoiling your loved-one, look no further – our Junior Executive Suite is the only one of its kind proving to be an exclusive haven for couples looking for a romantic getaway. Whether it is your honeymoon, anniversary or other dreamy getaway, we promise to exceed your starry-eyed expectations.

The décor of this elaborate suite gives ‘bush bling’ a complete new meaning by combining and merging the colours and textures of the African bush with a twist of contemporary flair. The open plan bathroom with its grandiose free standing bath will transport guests into a world of pure relaxation. Our additional romantic turndown service will spoil you and to top it all, allow your bath to be run and let us pamper you with our specially selected Matsimela range of body butter, bath soak, salt scrub, bath fizz ball and a candle to set the mood.



Junior Executive Suite

1 Suite | 2 pax sharing

- King size bed
- Flat screen television and DSTV
- Imported linen and towels
- Bathroom: free-standing bath, glass shower & double basin
- Power shower
- Spa bath
- Large full length mirrors
- Hairdryer and International shaver plug
- Air conditioning
- Electronic safe
- Iron/ironing board
- Tea & coffee making facilities
- Gowns and slippers
- Mineral water
- Room turn-down service





Why not go all out with an Executive Suite? Lavish and opulent, each of these suites are uniquely decorated and offers a haven of sophistication and luxury.

The charm and appeal of Africa is truly imbedded by the textures and hues applied in the decor. The attraction of the Executive Suites is enhanced by elegant and flamboyantly furnished private lounges showcasing flat screen televisions with DSTV and guest toilets graciously enhances the guest experience.

The marble bathrooms are grand and spacious and brag with free-standing spa baths, glass showers and twin basins. The customised, designer amenities are lavish and will pamper you beyond compare.



Executive Suite Bevy & Zeal

- King size bed
- Flat screen television and DSTV
- Imported linen and towels
- Writing desk
- Private lounge
- Bathroom: free-standing bath, glass shower & double basin
- Power shower
- Spa bath
- Large full length mirrors
- Hairdryer and International shaver plug
- Air conditioning
- Electronic safe
- Iron/ironing board
- Tea & coffee making facilities
- Gowns and slippers
- Mineral water
- Room turn-down service





If you enjoy the finer things in life, this is your suite!

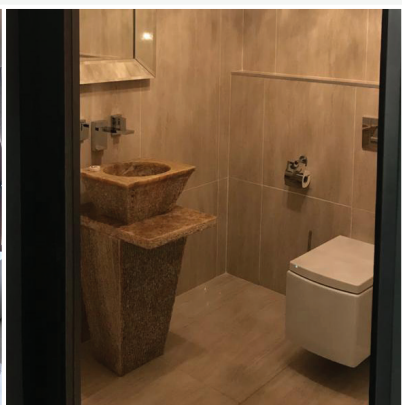
Highly recommended for newly weds to start their new journey in this lavish Presidential suite. With luxurious finishes, breath taking views, spacious marble bathroom with twin basins, designer amenities and the super luxurious king size bed, it will help you make every excuse not to step out of your suite.

With a romantic turndown, we are sure to set you in the mood for a blissful evening.



Presidential / Honeymoon Suites- Prickle & The Nest

- King size bed
- Flat screen television and DSTV
- Imported linen and towels
- Writing desk
- Private lounge
- Bathroom: free-standing bath, glass shower & double basin
- Power shower
- Spa bath
- Large full length mirrors
- Hairdryer and International shaver plug
- Air conditioning
- Electronic safe
- Iron/ironing board
- Tea & coffee making facilities
- Gowns and slippers
- Mineral water
- Room turn-down service





Offering family friendly fun, Palala Boutique Game Lodge has become famous as the ultimate family destination offering something for young and old.

Families of four will particularly enjoy our Family Suite which promises to cater for all your needs with two beautifully decorated bedrooms, fitted with a king size bed and two twin beds. These luxurious rooms boast spacious marble bathrooms with showers and double basins and specialised amenities are elegantly presented and offered for your benefit.

In addition, this suite's comfort and versatility is enhanced by a spectacular lounge area with flat screen television and DSTV.



Family Suite

1 Unit | 2 Rooms | 4 pax sharing

- Two bedrooms with king size bed and two twin beds
- Flat screen television and DSTV
- Imported linen and towels
- Private lounge
- Two bathrooms with glass showers and double basins
- Large full length mirrors
- Hairdryer and International shaver plug
- Air conditioning
- Electronic safe
- Iron/ironing board
- Tea & coffee making facilities
- Gowns and slippers
- Mineral water
- Room turn-down service





The 24 comfortable and modern rooms are ideal for colleagues sharing and is situated on the same premises as Palala's 5-star suites, only a few steps away from our main building.

Each room has two ¾ beds and a private bathroom. The en-suite bathrooms include a shower and other amenities comprise of air-conditioning, a bar fridge, tea & coffee making facilities, flat screen televisions with DSTV. Guests have access to our complimentary wifi.

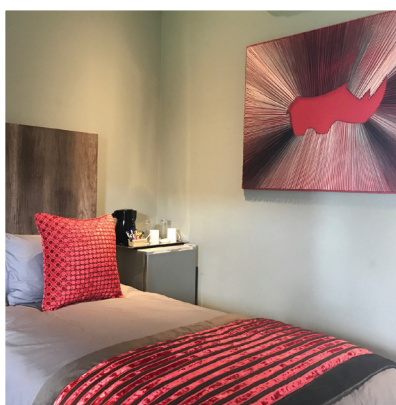
Boloka guests have access to an additional swimming pool at the rooms.



Quarters @ Boloka

24 Rooms | 48 pax sharing

- 3/4 beds
- Bathroom fitted with basin, toilet & shower
- Basic amenities
- Air-conditioning
- Flat screen TV
- Tea & coffee making facilities
- Bar fridge





These 18 newly refurbished rooms are perfectly situated on the edge of the dam with a beautiful sunset view. This non 5-star option is only a few steps away from Palala's main building, where guests can enjoy breakfast as well as all the other 5-star facilities.

The in-room amenities include an air-conditioner, a bar fridge, tea & coffee making facilities, flat screen televisions with limited DSTV as well as a spacious en-suite bathroom.



Hippos Walk

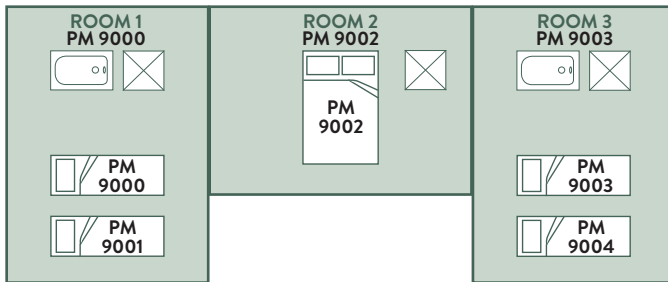
18 Rooms | 36 pax sharing

- 13 Twin rooms with en-suite bathrooms
- 5 Double rooms with en-suite bathrooms
- Bathroom fitted with basin, toilet & shower
- Refer to floor plan to see rooms with baths as well
- Basic amenities
- Air-conditioning
- Flat screen TV
- Tea & coffee making facilities
- Bar fridge

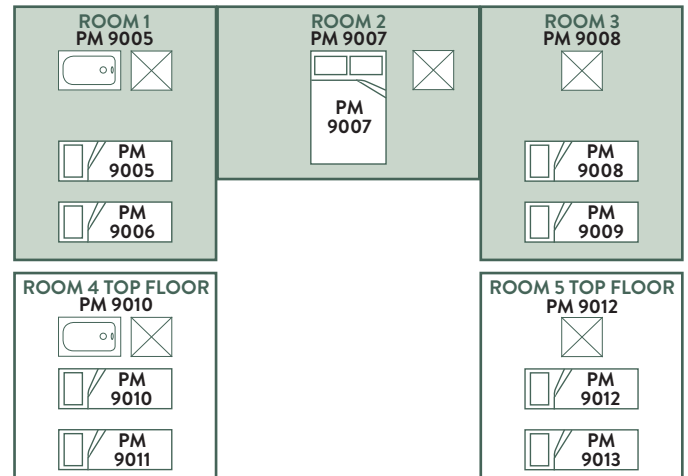




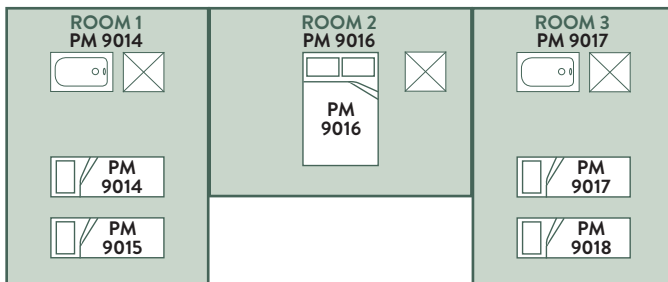
KUDU ROOMS



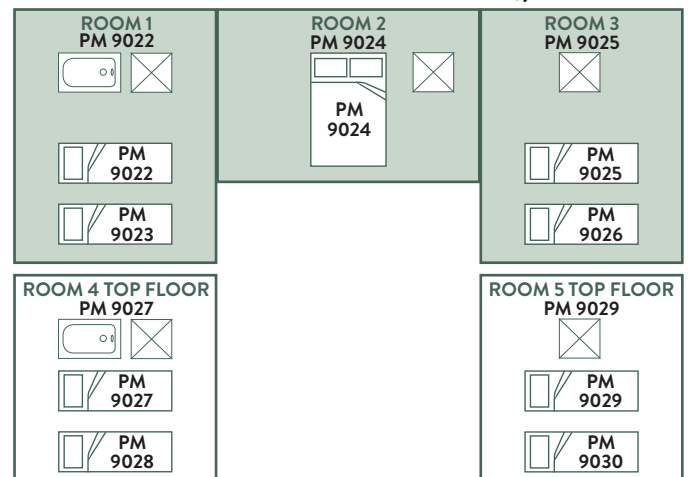
ELEPHANT ROOMS



WARTHOG ROOMS



BUFFALO ROOMS



HEDGEHOG ROOMS



LEGEND

SHOWER



BATH



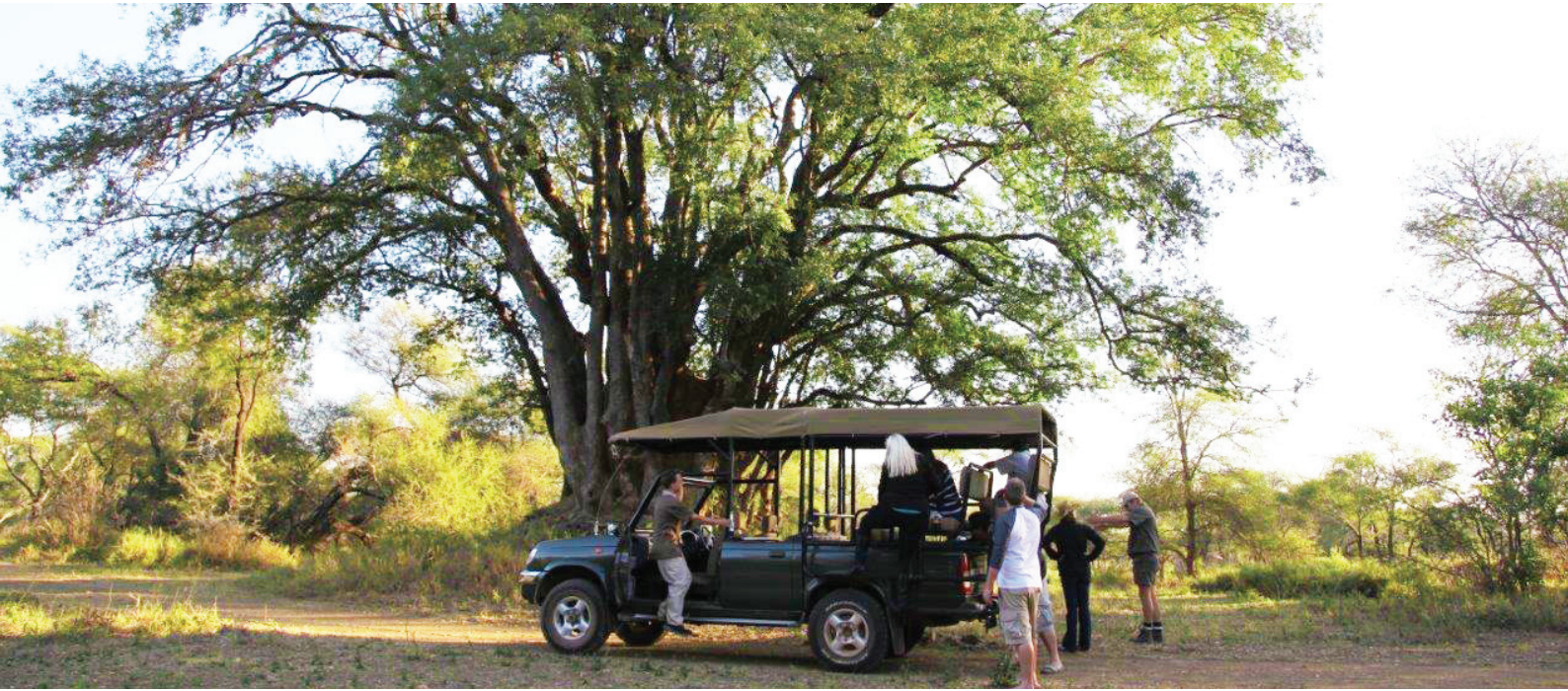
TWIN BEDS



KING BED



(015) 295 9212
079 885 1273
reservations@hipposwalk.co.za
Groblersbrug | Limpopo
South Africa



A kaleidoscope of activities promises to keep you occupied during your visit. Should relaxation be on your menu, the picturesque setting of the lodge and unique indulgence on offer as well as our world class Sediko Bush Spa will complete the picture. Our famous **picnics** will give you the opportunity to soak up all the pleasures of living in the moment by enjoying the sights, sounds and smells of the bushveld whilst enjoying an intimate royal feast.

For some fun-filled action, engage in the assortment of activities on offer ranging from **game drives**, **guided walks** to a breathtaking **predator tour**. Alternatively, opt for an outing on one of our **bicycle trails** or **angling** on the banks of the Limpopo river. Palala's popular **river cruise** will allow you to be taken on a slow and relaxing cruise on the Palala and Limpopo Rivers whilst enjoying delectable canapes and beverages.

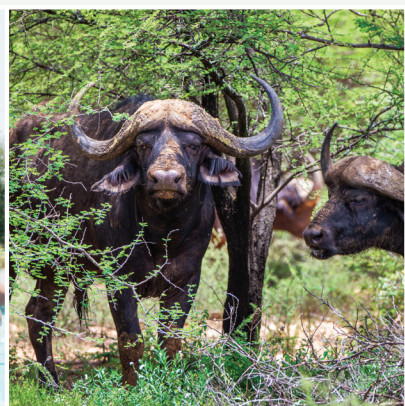
Home to more than three hundred different species of birds, the area is rightfully renowned as a **birders' paradise**. With our carefully situated bird hides you can order a picnic basket and spend the afternoon enjoying the sight and sounds of Limpopo's birdlife. At Palala's **Giraffa Centre** guests can learn all about conservation and get up close to the smaller characters of nature, such as meerkats, mongoose, owls and snakes.



Activities

A wide selection of activities

- Game drive
- River cruise
- Picnic lunch
- Crocodile feeding (Saturday only)
- Vulture restaurant and bird viewing
- High tea
- Guided walk
- Fishing (permit required)
- Bicycle safari





Our complimentary state-of-the-art, full-service fitness center, featuring stunning views of the African bush, is available to all adult lodge guests. The Sediko Fitness Centre's selection of state-of-the-art equipment.

Our outdoor lap swimming pool is available all year-round to all adult guests. Unwind with a relaxing session in the complimentary heated Jacuzzi, steam rooms or saunas.

Sediko Fitness Centre is an adult sanctuary. Fitness Centre Guests must be 18 years or older.



Fitness centre

A wide selection of activities

- Bench press
- Free weights
- Rowing equipment
- Exercise bike
- Stairmaster
- Treadmills
- Lap pool
- Tennis court available

